

**Electoral structure review - Surf Coast Shire Council - Preliminary Submission
Aireys Inlet and District Association - Aireys Inlet - 14 February 2023, 04:52 pm**

i have attached a PDF letter



AIREYS INLET AND DISTRICT ASSOCIATION INC

PO BOX 359 AIREYS INLET VICTORIA 3231

<http://www.aireys-inlet.org>

(Reg. No. A000710V)

13 February 2023

The Victorian Electoral Commission
Level 11, 530 Collins Street
Melbourne Victoria 3000

Dear Commissioner

RE: Surf Coast Shire Structure Review

The Aireys Inlet and District Association (AIDA) is making this submission in response to the Electoral Structure Review of the Surf Coast Shire Council on behalf of its 500 plus members.

AIDA has been a very active community association for over 60 years and works to preserve the low-key coastal character of the area between Urquhart Bluff and Eastern View on the Great Ocean Road. We work closely with our Council and Ward Councillors and have a very strong interest in the outcome of the current review.

The map we have provided divides the Surf Coast Shire Council area into four Wards each with three councillors. This is an increase of three councillors over the current arrangement. Alternatively, the number of councillors could be reduced to eight with the same ward structure but only two councillors representing each Ward.

Torquay is the dominant population centre in the Surf Coast Shire Council area with 15,236 registered voters. (The whole shire has 35,330 voters.) The remainder of the shire is divided between the coastal communities along the Great Ocean Road and the rural hinterland.

The coastal communities and rural hinterland have their own strong communities of interest. For this reason, we are proposing that the dominant population centre of Torquay, which has its own issues and urban communities of interest, be divided into two Wards (North Torquay and South Torquay – or Bells Beach) and that there be one Ward for the communities of interest in the hinterland (Winchelsea) and one Ward for the coastal communities (West Coast) - Anglesea, Aireys Inlet, Fairhaven, Moggs Creek, Eastern View and Lorne. These communities have strong common interests and issues.

**Electoral structure review - Surf Coast Shire Council - Preliminary Submission
Aireys Inlet and District Association - Aireys Inlet - 14 February 2023, 04:52 pm**

The coastal communities already have links between community organizations, and share many of the same concerns, such as caring for the coastal environment, pressures of tourism and traffic on the Great Ocean Road, public infrastructure and the impacts of climate change, particularly dealing with bushfires and erosion along the coast and the vulnerability of the Great Ocean Road. The inclusion of the immediate hinterland in this ward would also make sense given the close ties of population and employment with the coast.

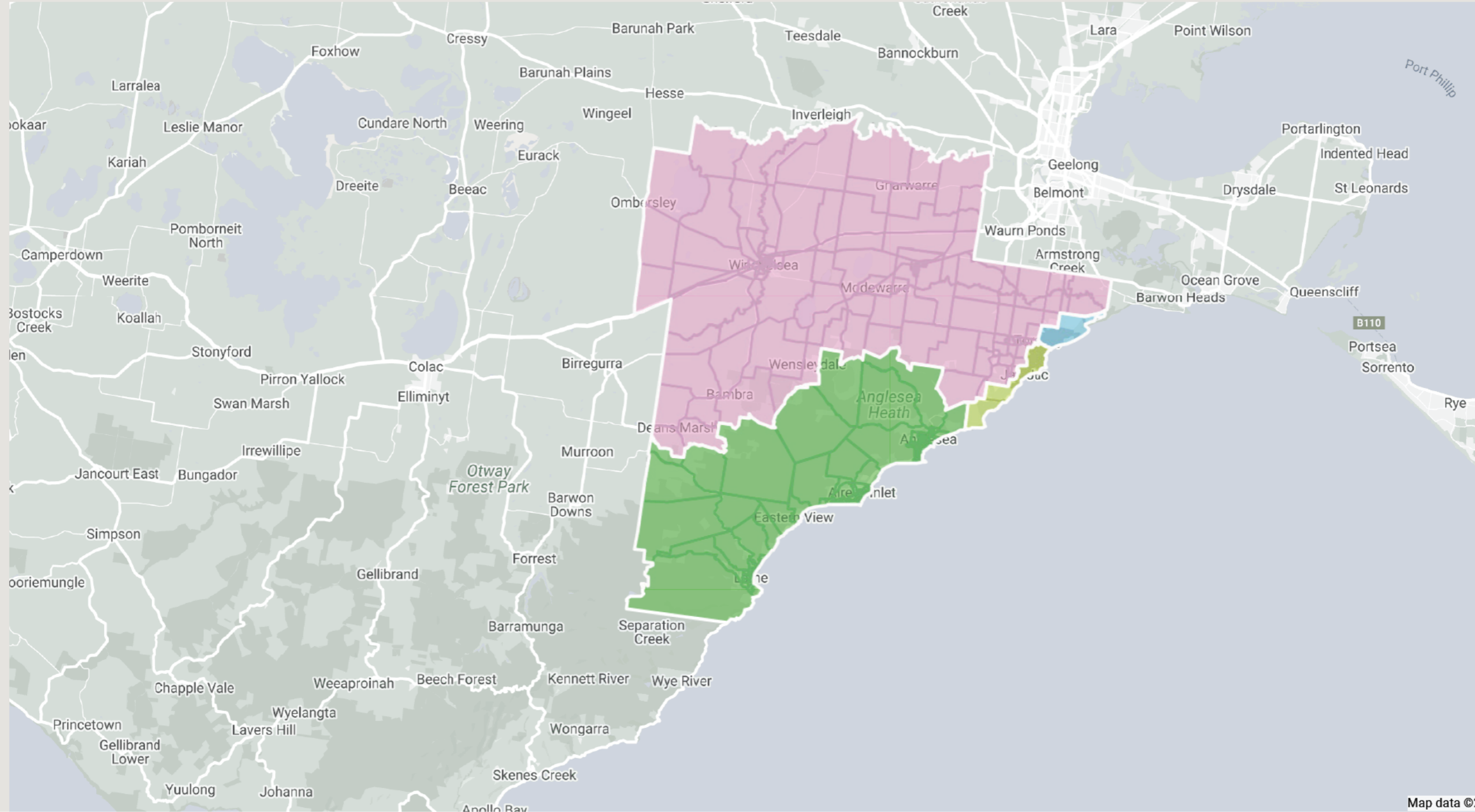
To achieve the requirements of the *Local Government Act 2020* that there be an equal number of councillors for each Ward and that there be a fair distribution of voters in all Wards (+or – 10%) we are proposing the Council be structured as shown in the attached map.

This submission is made on behalf of the Aireys Inlet and District Association. The Association would like to speak to its submission if there is an opportunity during the second phase of consultation.

We are happy to discuss our submission and to provide further information if required.

Yours sincerely
Charlotte Allen
President





MY WARDS		
Wards	Councillors	Voters Deviation
■ Unassigned	0	0

CURRENTLY IN VIEW			
■ North West	3	8,128	-7.98%
■ South West	3	9,342	+5.77%
■ Torquay North	3	8,528	-3.45%
■ Torquay South	3	9,332	+5.66%

ALL			
■ North West	3	8,128	-7.98%
■ South West	3	9,342	+5.77%
■ Torquay North	3	8,528	-3.45%
■ Torquay South	3	9,332	+5.66%

Total councillors 12

4 Wards 