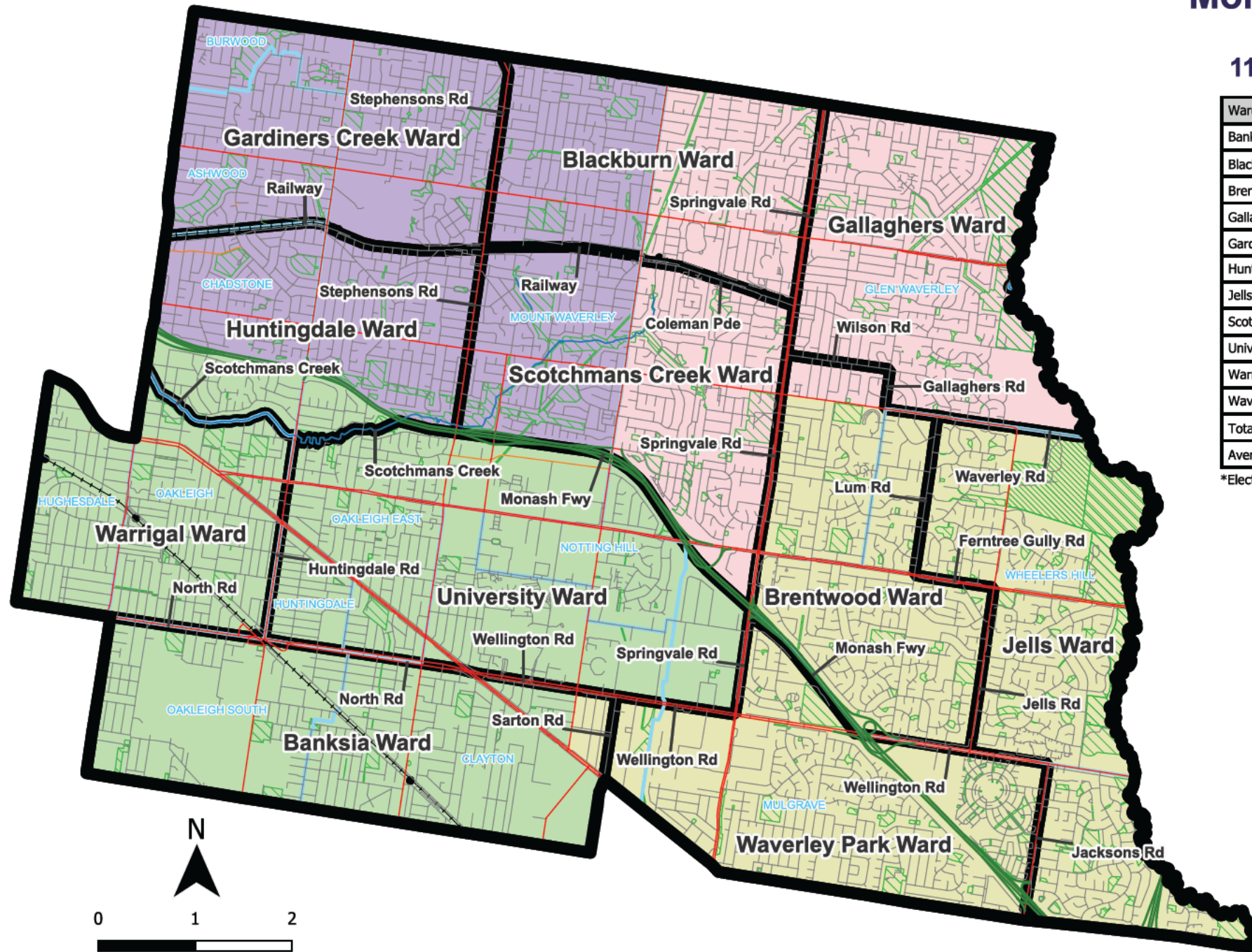


**Electoral structure review - Monash City Council - Response Submission**  
**Guru raja rao Krishnan - Glen Waverley - 20 July 2023, 09:26 pm**

Model 3 appears to fulfill the requirement of a single-councillor ward structure since it has individual wards with relatively similar elector numbers, ensuring each ward has a single councillor. The deviations in elector numbers are relatively lower in this model compared to the other models, making it a more balanced and representative option.

Ward	Electors*	Deviation	Area sq km
Banksia	10,809	-1.55%	9
Blackburn	10,776	-1.85%	6
Brentwood	10,107	-7.94%	7
Gallaghers	10,277	-6.40%	7
Gardiners Creek	11,624	+5.87%	7
Huntingdale	11,737	+6.90%	6
Jells	10,583	-3.61%	8
Scotchmans Creek	11,594	+5.60%	8
University	11,276	+2.70%	11
Warrigal	11,730	+6.84%	6
Waverley Park	10,258	-6.57%	8
<b>Total</b>	<b>120,771</b>		<b>81</b>
<b>Average</b>	<b>10,980</b>		<b>7</b>

\*Elector numbers as at 30 March 2023



### Legend

- Proposed boundaries
- Existing ward(s)**
  - Glen Waverley
  - Mount Waverley
  - Mulgrave
  - Oakleigh
- Map symbols**
  - Freeways
  - Major roads
  - Collector roads
  - Minor roads
  - Railways
  - Railway stations
  - Rivers & creeks
  - Lakes
  - Parks & reserves
  - Local government boundaries

